

# The GLS

Sport Utility Vehicle



Mercedes-Benz







## The lightness of being.

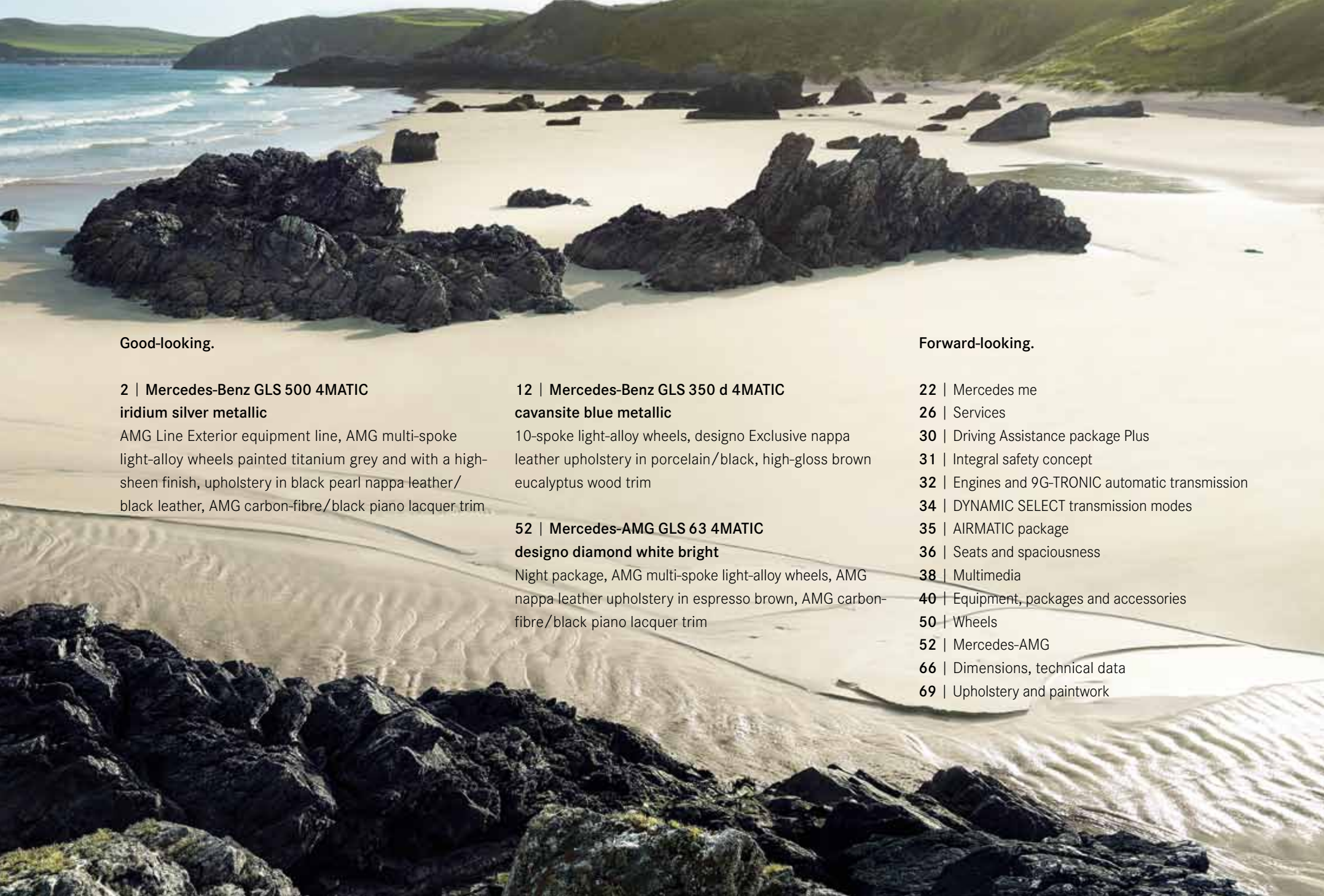
With time, with success and with experience, ambitions don't diminish. The journey just gets more enjoyable. More effortless. Safer. Everything feels easier on the road in the GLS, the SUV of the S-Class. Peace and serenity? You've never experienced them like this before. Power? More than enough. Limits? None that we're aware of.

### LOOKING.



Experience the GLS in exciting HD. With the Mercedes-Benz brochure app for the iPad® and with the Digital Owner's Manual from "Mercedes-Benz Guides" for the iPhone®. Both apps feature a host of films and further additional content, and are available free of charge from the iTunes Store®.





Good-looking.

**2 | Mercedes-Benz GLS 500 4MATIC**  
**iridium silver metallic**

AMG Line Exterior equipment line, AMG multi-spoke light-alloy wheels painted titanium grey and with a high-shine finish, upholstery in black pearl nappa leather/black leather, AMG carbon-fibre/black piano lacquer trim

**12 | Mercedes-Benz GLS 350 d 4MATIC**  
**cavansite blue metallic**

10-spoke light-alloy wheels, designo Exclusive nappa leather upholstery in porcelain/black, high-gloss brown eucalyptus wood trim

**52 | Mercedes-AMG GLS 63 4MATIC**  
**designo diamond white bright**

Night package, AMG multi-spoke light-alloy wheels, AMG nappa leather upholstery in espresso brown, AMG carbon-fibre/black piano lacquer trim

Forward-looking.

**22 | Mercedes me**

**26 | Services**

**30 | Driving Assistance package Plus**

**31 | Integral safety concept**

**32 | Engines and 9G-TRONIC automatic transmission**

**34 | DYNAMIC SELECT transmission modes**

**35 | AIRMATIC package**

**36 | Seats and spaciousness**

**38 | Multimedia**

**40 | Equipment, packages and accessories**

**50 | Wheels**

**52 | Mercedes-AMG**

**66 | Dimensions, technical data**

**69 | Upholstery and paintwork**



An aerial photograph of a sandy dune landscape. The dunes are covered with clumps of green grass, and the sand is a light, bright color. The perspective is from above, looking down on the dunes. The grass is in various stages of growth, with some clumps being larger and more dense than others. The shadows of the grass are cast onto the sand, creating a pattern of light and dark. The overall scene is a natural, undisturbed coastal environment.

Charisma.  
Without any effort at all.

It's an art mastered by very few: the GLS commands its surroundings just by being there – and with an enticingly high-quality design. Characteristic features include the powerdomes on the bonnet and the filigree pattern of the radiator grille with its large three-pointed star. This three-dimensional effect is extremely complex to design and produce, but it gives the front end of the GLS its signature look.












A silver Mercedes-Benz GLS is partially visible on the left side of the frame, parked on a sandy dune. The foreground is dominated by tall, thin blades of grass that are slightly out of focus. The background shows a sandy beach leading to a calm body of water under a clear sky. The car's rear wheel and part of its body are visible, emphasizing its presence in a natural, off-road setting.

Masculine, self-assuredly sporty – on a Mercedes the size of the GLS, every component is a statement. The powerful rear end with integrated tailpipe trim in a distinctive design, the chrome-look load sill guard and the two-piece full-LED rear light clusters help to define the dynamic character of the GLS. The darker it gets, the more they stand out – for that perfect appearance.







A silver SUV is shown from the side, driving on a sandy dune path. The car is kicking up sand as it moves. The path is lined with tall, green grass. In the background, there is a blue body of water, a distant mountain range, and a clear blue sky with some light clouds.

Off the beaten track.  
Leaving the familiar behind.



A place of refuge  
for visionaries.







Endless expanses. An awesome sense of calm. Somewhere you're always keen to return to. The interior of the GLS. Highlights include the standard DYNAMIC SELECT Controller, the large media display with its high-quality glass finish and the touchpad that comes with the optional COMAND Online. The 3-spoke multi-function steering wheel in nappa leather, with an airbag cover also in nappa leather, is a sensory experience in its own right. Options include high-grade trim finishes in wood, aluminium, piano lacquer or carbon fibre.





## There are still seats to be had in seventh heaven.

Travel in the GLS is so luxurious that you really ought to share it. Three rows of seats as standard offer top-level comfort and ample space for up to seven occupants. The seats can be used very flexibly, featuring as they do backrest angle adjustment for the second row and electric folding for the third. Heated seats are available as an option for the rear as well.







#### THE OFF-ROAD ADVENTURE. THE GLS IS READY.

The comfort, the space, the equipment and appointment options – no question about it, the GLS is as if made for long, relaxed journeys. That's why there's an S in GLS. It represents the comfort of an S-Class. But there's a G there too – and at Mercedes-Benz that stands above all for: harder, higher, further. Our competence with all things off-road is legendary, a reputation established above all by the indestructible G-Class. There's more than just one letter of that name in the GLS: simply press the "Offroad" button to activate the off-road transmission mode. This adjusts the suspension and drive components to the optimum configuration. A further available option is the Off-Road Engineering package, which includes a low-range gearbox, a differential lock on the centre differential, protective panelling for the engine and an adjustable ride height.













## All the best locations.

Sometimes air can be a real luxury. When we take a very deep breath, when we feel a rough wind blowing through our hair or when travelling in the GLS. The air inside the car can be ionised, if you so wish, so perceptibly improving your sense of wellbeing. The AIRMATIC air suspension with the ADS PLUS Adaptive Damping System also cushions the car's occupants at a whole new level of comfort. Further features include the 9G-TRONIC 9-speed automatic transmission and numerous driving assistance systems that are available in this class of vehicle. It is hard to think of a more comfortable, more assured and safer way to travel.





Enhance your prospects.









S-Class, when that's what you want.  
SUV, when that's what you need.



That's what luxury is about: to invest everything in the business and even more in the family. To spend time with friends, yet sometimes just to be on your own. Luxury is the perfect balance. So important is it, that the GLS has a special Controller just for this purpose: the DYNAMIC SELECT Controller. You can use it to select any one of up to six transmission modes, which offer the full range between pronounced comfort and extreme off-road capability. Because every day is different. And every journey and every person, as well.









Digital life can be exciting. In the GLS it involves high-resolution displays, touch-sensitive touchpads and comprehensive networking. How reassuring to know that you can also just lean back and relax. Enjoy a perfectly coordinated colour scheme, with a specially selected range of shades and combinations. Sit back and enjoy the ginger beige or espresso brown interior, highlighted with exquisite trim elements, perhaps with a carbon-fibre or piano lacquer finish, according to taste.









Our world in your hands.

[www.mercedes.me](http://www.mercedes.me) – it's all about you. Discover a world of fascinating services, products and innovations that will simplify and enrich your life. Coming straight to you in digital form. And turning our world into your world.









## Life can be so fascinating when you're fully connected.

All our connectivity and mobility services plus a host of other fascinating features – all in one place and exclusively for you. That's Mercedes me. Register free of charge today and make the world of Mercedes-Benz your very own at your convenience – on your PC or laptop or in mobile mode via tablet, smartphone or smartwatch. And because your life is forever changing, our services are also continually evolving. Join us now at: **[www.mercedes.me/welcome](http://www.mercedes.me/welcome)**

Looking for individual inspiration in real life, too? The Mercedes me Stores are a fascinating phenomenon worldwide – in Beijing, Moscow and Hamburg, for example.





**Mercedes me connect** connects you with your vehicle – and your vehicle with the whole world. A comprehensive range of convenient connectivity services relating to all areas of your vehicle supports you, ensuring greater safety, closer contact and an even more fascinating driving experience. It's reassuring to stay connected all the time while you're on the move. Mercedes me connect includes Standard Services, which are able to provide you with automatic support in the event of a breakdown or an accident, as well as Remote Online Services – the option enabling vehicle settings to be carried out by smartphone – and lots more.

**Mercedes me inspire** offers special brand experiences and an opportunity to engage in an inspiring dialogue. We aim to share our ideas with you, and we would like to know your ideas and wishes. So that we can always offer you the best solutions. A community is available to this end, and you will also find a growing range of offerings and experiences which go beyond the traditional vehicle-related topics – from areas such as events, travel and lifestyle.

**Mercedes me move** offers access to intelligent mobility solutions: car2go is the pioneer and global market leader in free-floating car sharing, the moovel mobility app pools the offerings from various mobility providers to find the ideal route from A to B. With the mytaxi app you can order a taxi, track its approach live and pay for your journey in a convenient manner. Mercedes-Benz Rent offers vehicles to suit all occasions for short- or long-term rental from an authorised Mercedes-Benz dealer near you. Blacklane enables you to book a chauffeur-driven limousine, FlixBus offers inexpensive, comfortable and environment-friendly trips on long-distance coaches.

**Mercedes me assist** makes easy work of organising maintenance for your vehicle, providing a convenient online means of locating a Mercedes-Benz dealer in your neighbourhood and arranging a service appointment. The digital service report keeps you up to date on performed service work at all times. The report is available to you online just one day after a service. In addition to the current service report, you can also view your vehicle's complete service history and service intervals, and you can print out this information whenever required.

**Mercedes me finance** offers you various routes to your vehicle of choice. Mercedes-Benz Bank/Mercedes-Benz Financial Services finds the ideal leasing, financing and insurance solution together with you – tailored to your needs. Our leasing products enable you to drive the latest models at all times while enjoying maximum flexibility, as you pay not for acquisition of the vehicle, but only for its use. You also benefit from attractive monthly instalments. Our financing arrangements let you pay for your new Mercedes-Benz in a way that suits your personal budget. You can tailor your monthly instalments to your needs by deciding on an appropriate down-payment and term for your contract. Our individual insurance solutions offer reliable protection for your budget and your vehicle on attractive terms. Once a contract is in place, you can conveniently manage your finance applications online.<sup>1</sup>

<sup>1</sup> Depending on market availability.



## Our service: the perfect fit for your Mercedes.

Beyond the car itself, you also acquire something priceless – an exclusive partnership with Mercedes-Benz. For you, this means safety, independence and motoring free of any worries. In other words: the reassuring feeling of driving a Mercedes.

**The best for your Mercedes.** Nobody knows your Mercedes better than our experienced specialists at the Mercedes-Benz workshops. The comprehensive range of services and the high standard of quality ensure that your vehicle is in top condition. We use proven Mercedes-Benz GenuineParts and special tools to this end.

**The best for you.** Motoring free of any worries right from the word go: with the tailor-made Mercedes-Benz Service Contracts. These offer you the benefits of a reliable basis for long-term planning, permanent control over costs, fixed monthly rates, cost transparency and ideal protection from additional workshop costs.

**The best for your mobility.** The Mercedes-Benz Mobilo<sup>1</sup> mobility solution provides for motoring free of any worries throughout Europe – covering breakdowns, accidents, minor mishaps and vandalism. The benefits offered by Mobilo include on-the-spot assistance, a replacement vehicle, towing and overnight hotel accommodation, for example. Mobilo comes free of charge for the first two years after initial registration and can subsequently be renewed each time the vehicle is serviced by an authorised service partner, for a period of up to 30 years in all. Whenever you need assistance, you can reach us free of charge throughout Europe on 00800 1 777 7777<sup>2</sup>.

### ↘ FIND OUT MORE

For the full information on Mercedes-Benz Service Contracts, go to [www.mercedes-benz.com/servicevertraege](http://www.mercedes-benz.com/servicevertraege) – or ask your authorised Mercedes-Benz dealer to draw up an individual offer for you.

<sup>1</sup> Our general terms and conditions apply. The period of validity is extended after each service carried out by an authorised Mercedes-Benz service partner until the due date for the next service – up to a maximum of 30 years after initial registration. <sup>2</sup> Roaming charges may apply when calling from abroad.







## What would motorsport be without Mercedes-Benz?

The first vehicle to ever win an automobile race was powered by a Daimler engine. The first Mercedes was a racing car. The Silver Arrows – a true legend. Mercedes-Benz has a long tradition of involvement with the world of sport. Motorsport shapes the brand and every vehicle bearing the Mercedes star to this day. Discover the brand's unique history first-hand: at the Mercedes-Benz Museum in Stuttgart.

### ↘ FIND OUT MORE

Discover just what has been moving the world for over 130 years and take a journey through time as well as through the history of the automobile at the Mercedes-Benz Museum. More than 1500 exhibits await you on 16,500 m<sup>2</sup> of floorspace, including unique gems such as the oldest surviving Mercedes from 1902 or the legendary gull-wing models. Welcome to a place of innovation:

[www.mercedes-benz.com/museum](http://www.mercedes-benz.com/museum)

[www.facebook.com/mercedesbenzmuseum](https://www.facebook.com/mercedesbenzmuseum)

[www.instagram.com/mercedesbenzmuseum](https://www.instagram.com/mercedesbenzmuseum)

[www.twitter.com/mb\\_museum](https://www.twitter.com/mb_museum)

[www.google.com/+mercedesbenzmuseum](https://www.google.com/+mercedesbenzmuseum)

[www.youtube.com/mercedesbenzmuseum](https://www.youtube.com/mercedesbenzmuseum)





## What would Mercedes-Benz be without motorsport?

3 June 1934 marked the beginning of the Silver Arrows legend in the International Eifel Race at the Nürburgring. Today this legend is more alive than ever: in 2016 the Silver Arrows works team MERCEDES AMG PETRONAS won the Formula-1 constructors' and drivers' titles for the third year in a row, making history by winning 19 of the 21 Grand Prix races. In a spectacular finale in the desert city of Abu Dhabi, Nico Rosberg secured his first world championship title in his Mercedes-Benz F1 W07 Hybrid. The value of these successes extends way beyond the race track: every mile raced advances the development of lightweight materials and hybrid technology, among other things, for series production.

### FIND OUT MORE

Fascinating Formula 1 goes multimedia:

[www.facebook.com/MercedesAMGF1](https://www.facebook.com/MercedesAMGF1)

[www.twitter.com/MercedesAMGF1](https://www.twitter.com/MercedesAMGF1)

[www.youtube.com/MercedesAMGF1](https://www.youtube.com/MercedesAMGF1)

[www.google.com/+MercedesAMGF1](https://www.google.com/+MercedesAMGF1)

[www.instagram.com/MercedesAMGF1](https://www.instagram.com/MercedesAMGF1)

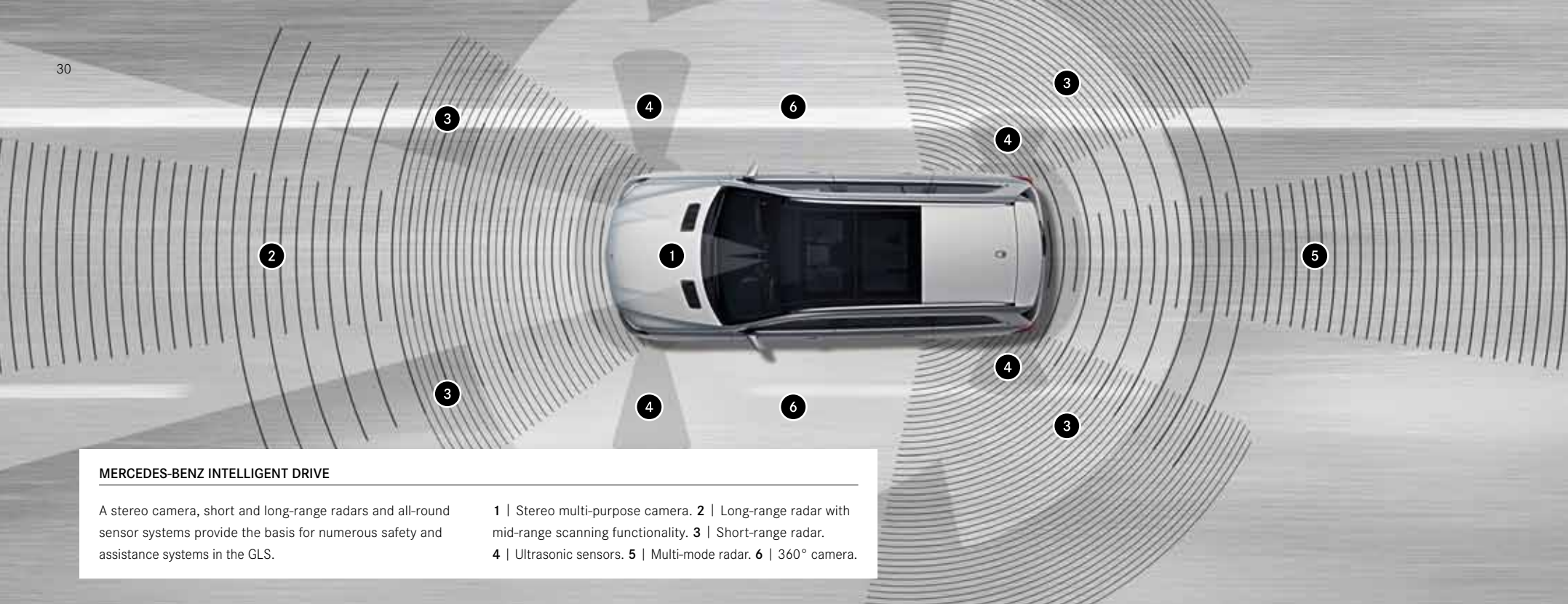
[www.MercedesAMGF1.com](http://www.MercedesAMGF1.com)

[www.mercedes-benz.com/motorsport](http://www.mercedes-benz.com/motorsport)



Mercedes-Benz F1 W07 Hybrid, 2016 season.





#### MERCEDES-BENZ INTELLIGENT DRIVE

A stereo camera, short and long-range radars and all-round sensor systems provide the basis for numerous safety and assistance systems in the GLS.

1 | Stereo multi-purpose camera. 2 | Long-range radar with mid-range scanning functionality. 3 | Short-range radar. 4 | Ultrasonic sensors. 5 | Multi-mode radar. 6 | 360° camera.

## Driving Assistance package Plus. Positively safer.

A combination of complementary safety and assistance systems, available as options, can help to relieve driver stress, reduce the risk of accidents and improve protection for both the occupants and other road users. The Distance Pilot DISTRONIC with Steering Pilot helps the driver to maintain a safe distance from vehicles travelling ahead and to keep the vehicle in the centre of the lane. In this way, the system provides a great deal of stress-relieving comfort, especially on long journeys and when following vehicles in a traffic jam. Active Brake Assist with cross-traffic function can reduce the risk of rear-end

and junction collisions as well as collisions with pedestrians, in particular when driving in urban areas. Active Lane Keeping Assist and Active Blind Spot Assist provide assistance if the vehicle inadvertently drifts out of its lane or if the danger of collision with other vehicles arises when changing lanes. One-sided brake interventions can help to steer it back into lane or avoid an accident. And finally, PRE-SAFE® PLUS extends the functions of the PRE-SAFE® anticipatory occupant protection system with preventive measures when a rear-end collision threatens.



# The reassuring feeling of driving a Mercedes-Benz.

We are the first automotive manufacturer worldwide to have developed an **integral safety concept**, aimed at avoiding accidents, ensuring ideal responses to dangers and lessening the consequences of accidents. For the occupants of a Mercedes-Benz and for all other road users, too.

## SAFE DRIVING

---

**Traffic Sign Assist** is able to detect speed limits, no-entry and no-overtaking signs and their cancellation, and improves driver awareness by displaying these in the instrument cluster. Part of the optional COMAND Online.

**Adaptive Highbeam Assist Plus**, available as an option, allows the high-beam headlamps to be kept on permanently, since oncoming traffic or vehicles in front are masked out in the cone of light.

**ATTENTION ASSIST** is able to recognise typical signs of tiredness from the steering style and warn the driver accordingly.

A further function of ESP® is **Crosswind Assist** with automatic lane-correcting braking intervention. The **4ETS electronic traction system** can prevent the driven wheels from spinning on one side when moving off and accelerating by means of brake actuation, as well as prevent both driven wheels from spinning momentarily when cornering within certain speed ranges.

## IN THE EVENT OF DANGER

---

**Active Brake Assist** gives the driver a visual warning if the distance to the vehicle ahead is too small. If the risk of a collision has been detected, an acoustic warning is given; the system can support the driver's braking action or brake autonomously if they fail to respond.

The **occupant protection system PRE-SAFE®** is able to identify critical driving situations in advance and to initiate precautionary measures to protect the vehicle's occupants if an accident appears imminent. Such measures include reversible belt tensioning or automatic closing of open side windows, for example.

## IN AN ACCIDENT

---

Numerous **airbags** protect the occupants in the event of an accident, so potentially reducing the risk of serious injury: adaptive airbags and sidebags for the driver and front passenger, kneebag for the driver plus windowbags. If no one is sitting in the front passenger seat or a child seat is detected, the front passenger airbag can be automa-

tically deactivated. This way small children are protected from injuries caused by the front-passenger airbag deployment. Detection is assured through a pressure sensor.

Should the front of the vehicle collide with a pedestrian, the rear section of the **active bonnet** can lift up if necessary. The extra distance to the components inside the engine compartment creates an additional deformation space that can help reduce the risk of injury to pedestrians in certain accident situations.

## AFTER AN ACCIDENT

---

Every Mercedes-Benz is fully trained in first aid. If the worst comes to the worst, the engine can be stopped automatically, the hazard warning lights and emergency interior lighting can be activated, and the central locking can be unlocked. And finally, the standard-fit integral **Mercedes-Benz emergency call system** (country-specific) can transmit GPS position data and important vehicle information, though it is to be hoped this will never be necessary.



# The gene for effortless superiority is called V8.

Efficient right from the start and endless power. The engine range for the GLS offers the perfect solution to every need. But one engine is particularly close to our hearts, in its own irresistibly sonorous way: the V8 in the **GLS 500 4MATIC**. What an auditory experience, what a soft, velvety way to deliver power! It's enough to give even the most experienced automotive enthusiast goose bumps. This engine is just ideal for powering the SUV in the S-Class. In this Mercedes that oozes self-assurance with every fibre of its being. It's hard to describe the ease with which even such a large SUV accelerates, how smoothly each command to the accelerator pedal is obeyed. An incredible peak torque of 700 Nm translates into almost inexhaustible reserves of power in virtually any driving situation.

**Sympathetically supported by the world's very first 9-speed automatic transmission.**

With nine forward gears, the 9G-TRONIC automatic transmission enables efficiency, comfort and dynamism of an entirely new dimension. Its high efficiency helps to reduce fuel consumption. The wider ratio range allows a reduction

in engine speed. Performance remains excellent, while ride comfort is enhanced and noise levels are reduced. Faster shift changes allow even more spontaneity and agility. At the same time 9G-TRONIC impresses with its gentle, almost imperceptible gear changes. As 9G-TRONIC is able to skip individual gears, multiple downshifts are possible for fast and powerful sprints.

THE ENGINE RANGE

Diesel:

GLS 350 d 4MATIC with an output of 190 kW (258 hp) and a peak torque of 620 Nm

Petrol:

GLS 400 4MATIC with an output of 245 kW (333 hp) and a peak torque of 480 Nm

GLS 500 4MATIC with an output of 335 kW (455 hp) and a peak torque of 700 Nm

Mercedes-AMG GLS 63 4MATIC with an output of 430 kW (585 hp) and a peak torque of 760 Nm

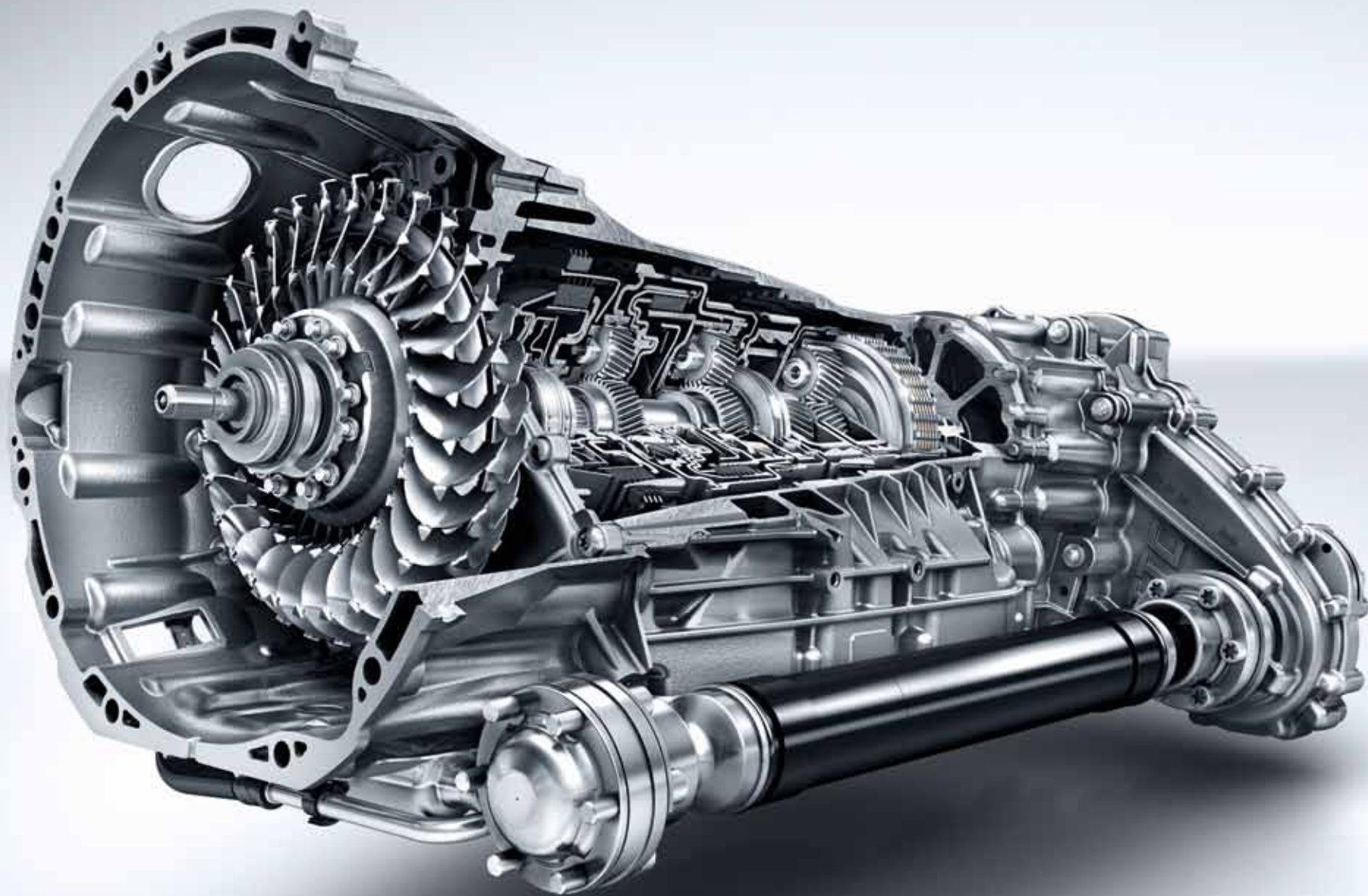
DRIVE SYSTEM TECHNOLOGIES

The standard-specification **ECO start/stop function** shuts off the engine temporarily at a red light or in a traffic jam in order to lower fuel consumption further.

**Cruise control with variable speed limiter** allows relaxed and fuel-saving driving especially on long journeys. In addition to the desired cruising speed, an individual maximum speed can be set e.g. to be sure of obeying speed limits.

↘ FIND OUT MORE

Further technical data for each of the various engines may be found on page 68.







## An innovation that changes almost everything: DYNAMIC SELECT.

Comfortable, sporty, winter-optimised or entirely individual engine, transmission, suspension and steering settings can be called up with the **DYNAMIC SELECT** Controller on the centre console. Harmonious and efficient driving is made possible by the “Comfort” transmission mode. “Sport” is characterised by a sportier configuration of the suspension, which has also been lowered by 15 mm, and tauter damper settings, in each case in conjunction with the AIRMATIC package, along with sporty steering characteristics and modified shift points. The “Slippery” transmission mode provides optimised handling on icy and snow-covered roads, while “Individual” allows precise configuration of the various parameters to suit the driver’s wishes.

### FOR THOSE SPECIAL OCCASIONS: THE OFF-ROAD ENGINEERING PACKAGE

Whether on- or off-road, on easy or difficult terrain, on fast bends or in snow – the optional **Off-Road Engineering package** makes it possible to adjust handling to suit the specific situation to perfection, just by turning the DYNAMIC SELECT rotary switch. A total of six modes are available to choose from via DYNAMIC SELECT – two of which are designed to assist the driver when driving on a difficult surface. The characteristics of the ESP®, 4ETS, ASR, steering, ground clearance, air suspension and damping, for example, are automatically adjusted according to the mode selected. The selected transmission mode is displayed in the instrument cluster and in the media display by means of an animation that depicts, for example, gradient and tilt angle. For off-road operation there are the options “Offroad” for sand and light terrain and also “Offroad+” for difficult terrain.



## AIRMATIC. The ultimate in continuous smooth operation.

The standard-specification air suspension system **AIRMATIC**, together with the **ADS PLUS Adaptive Damping System**, ensures a high level of ride comfort and excellent driving dynamics. The damping system adjusts continuously to the actual driving and road conditions at each wheel. Pitching and rolling motion, for example when cornering or braking, can be effectively reduced. It is possible to select between a comfortable and a sportier configuration for the AIRMATIC package. The level control system ensures a constant vehicle level regardless of its load and driving condition. At high speeds, and in the “Sport” transmission mode, the vehicle is lowered by up to 15 millimetres in order to reduce wind resistance and further increase stability. Off-road capability can be increased by raising the level by up to 90 mm – depending on the specification.

---

### IMPROVED COMFORT. IMPROVED DYNAMISM. IMPROVED TRACTION.

---

The active stabiliser bars of the optional **ACTIVE CURVE SYSTEM** reduce any tendency of the vehicle to roll, so ensuring enhanced ride comfort on the road. When driving off-road, the higher degree of articulation facilitates greater traction.

Excellent handling on any surface – thanks to **4MATIC permanent all-wheel drive** in combination with ABS, ESP® and the electronic traction system 4ETS. On- or off-road, in wet weather, ice or snow: traction, driving dynamics and driving stability are improved.

---





## Surrender before such seating comfort.

Thanks to their inflatable air chambers, the optional **multicontour seats with massage function** ensure the best possible seating comfort for driver and front passenger. That is why they are recommended by the AGR spinal health organisation. Driver and front passenger can use various air chambers to individually adjust their seats to suit their personal physique – from seat cushion depth via the side bolsters to the position and curvature of the backrest. A lumbar adjustment gives added support to the spine. The massage function with seven zones and two selectable intensities prevents muscle tension in particular on long journeys. The luxury head restraints enhance comfort still further.



### SEATING COMFORT

The optional **EASY-ENTRY system** facilitates access from either side – at the touch of an electric button – to the third seat row. The backrests and bench seat of the second row of seats can be folded forward electrically with a split of 60% (left) to 40% (right).

The **Memory package** is especially convenient if the vehicle is used by more than one person. Up to three different positions for the electrically adjustable front seats, steering column and exterior mirrors can be stored or retrieved at the touch of a button.

On a hot day, the active ventilation function of the optional **seat climate control system** rapidly cools the surfaces of the front seats to a pleasant temperature to ensure well-balanced seating comfort. In cold weather conditions, the on-demand seat heating provides cosy warmth as required.

# Large as ever. Versatile as never before.

With a capacity of up to 2300 l, the load compartment of the GLS is the largest in this segment. The load space behind the second seat row is 680 l. The standard-fit EASY-PACK tailgate, the 60:40 split folding rear seats and the headroom of 1.95 m below the open tailgate make the load compartment exceptionally versatile and allow easy loading and unloading.

## LOAD COMPARTMENT AND VARIABILITY

The **EASY-PACK tailgate** can be opened and closed at the touch of a button for more convenient loading and unloading of the load compartment.

The **EASY-PACK load compartment cover** protects luggage from the sun and prying eyes. It consists of a retractable cover, which is mounted behind the rear seats, and can be removed at any time.

The practical **through-loading feature** above the rear armrest is an option that allows the transport of long objects. A flap is opened from within the luggage compartment to enable loading.

Six **load-securing rings** on the floor of the load compartment and the backrests of the third row of seats, together with a **folding bag hook** on the right-hand side of the load compartment, provide practical help with transporting a diverse range of items.







## See it, feel it, touch it, hear it: get excitement.

Navigation, telephone, audio, video, internet – the optional control and display system **COMAND Online** ensures that the driver has all these and many other functions in clear view and within easy reach. Information is displayed in high resolution on a smartly finished and centrally positioned glass screen with a diagonal measurement of 20.3 cm (8 inches). The **touchpad** enables intuitive operation by means of hand gestures, and users can input letters, special characters and numbers in their own handwriting. Three additional buttons control key functions such as the "Back" function, the "Favourites" menu and the audio quick menu. Using the touchpad or buttons gives users clear haptic feedback.



### MULTIMEDIA AND INFOTAINMENT

The **Audio 20 CD** multimedia system comes with internet capability, radio, twin tuner and CD drive, and allows networking with mobile devices via Bluetooth®.

User-friendly navigation, precise map data and excellent route guidance – the optional **Garmin® MAP PILOT** brings all the benefits of a Garmin® navigation system to the Audio 20 CD. This is done very simply by inserting an SD card with navigation software and map data sets.

Carefully matched technical components, together with the Logic 7® technology from **Harman Kardon®**, provide an unmistakably authentic surround sound if so required. Passengers in all seats enjoy a thrilling 360-degree audio experience.

An optional high-end surround sound system developed in conjunction with **Bang & Olufsen®**, with a total output of 1400 watts, 14 high-performance loudspeakers including two tweeters featuring "Acoustic Lens Technology" with LED illumination in the front mirror triangles and an individually configurable sound setup, turn the vehicle's interior into a concert hall with acoustics that just take your breath away.









## The standard equipment.

The S in the name comes with a commitment. To an exceptionally high standard of equipment and appointments – right from the start. The highlights of the standard specification are outlined here, while full details may be found in the price list, which can also be downloaded online: [www.mercedes-benz.com](http://www.mercedes-benz.com)

### EXTERIOR HIGHLIGHTS

Sliding glass sunroof, electric
Beltline and side-skirt trim strips, plus roof rails, in chrome look
Rear bumper with new-look lower section and underguard in chrome look
Twin-pipe exhaust system with two integrated chrome-plated tailpipes (non-functional with diesel engines)
Two-piece LED rear light clusters with new lighting design

### INTERIOR HIGHLIGHTS

Media display with 17.8 cm (7-inch) screen diagonal
3-spoke multifunction steering wheel trimmed in nappa leather with steering-wheel gearshift paddles and 12 function buttons
DYNAMIC SELECT Controller
7-seater
Upholstery and upper section of dashboard in ARTICO man-made leather
THERMATIC automatic climate control
High-gloss brown eucalyptus wood trim



## The optional equipment.

There are numerous options that allow you to personalise the GLS. From small details that just add a certain something, through to luxurious and comfortable appointments. Why not take the time to browse online? You can configure the GLS to suit your own personal preferences via [www.mercedes-benz.com](http://www.mercedes-benz.com)

1 The **Parking Pilot with PARKTRONIC** makes finding a parking space easier, as well as parking in both parallel and end-on spaces, and also assists when exiting a parallel parking space. The system automatically steers the vehicle into parking spaces, relieving the driver of the work of steering and braking.

2 With its large glazed areas, the **panoramic sliding sunroof** ensures a particularly bright and welcoming ambience in the interior. It consists of a fixed panoramic glass rear section above the second seat row and an electrically-operated sliding glass front section for ventilation of the interior as required.





3



4 5



6



3 Films on DVD, music or TV in conjunction with the optional TV receiver – the **Rear Seat Entertainment System** offers passengers in the back their very own entertainment programme. Two 20.3 cm (8-inch) displays and Kleeer wireless headphones provide brilliant picture and sound quality.

4 When not in use the **trailer coupling** can be electrically folded behind the rear bumper to save space. In order to connect a trailer or to mount a cycle rack it can be simply swung out electrically again and automatically fixed in its operating position.

5 The aluminium-look **illuminated running boards** are a real eye-catcher. They are mounted on the side at the height of the side skirts, thus making it easier to get into the front and rear. Slip-resistant rubber studs ensure a firm foothold.

6 The **MAGIC VISION CONTROL** adaptive windscreen wiper system provides the driver with an optimum view even while wiping. The washer fluid is sprayed directly in front of the wiper blades and wiped away without delay. The heating system effectively lowers the risk of icing-up.



# The EXCLUSIVE Interior line.

The select appointments of this line create a trendsetting interior which reinterprets the meaning of luxury to exciting effect. The interior concept features tasteful colour combinations and large areas of trim, for which a variety of wood finishes can be selected, create further visual highlights. The multi-coloured ambient lighting creates a refined ambience in the vehicle interior.



**THE EXCLUSIVE INTERIOR LINE.**

Luxury seats with exclusive seat upholstery layout finished in leather

Lower part of dashboard and beltlines in ARTICO man-made leather

Ambient lighting

Fabric roof liner

Velour floor mats

# The designo Exclusive package.

The designo Exclusive package impresses with exquisite materials and high-quality details. The comfort seats at the front in fine designo nappa leather – optionally in porcelain/black or espresso brown – with “designo” badges in the seat backrest cushions, feature a distinctive seat design with exclusive diamond quilting. Together with the dashboard and door centre panels, also in designo nappa leather, they set fine highlights in the vehicle interior. A colour-coordinated designo roof liner and the twin sunblinds in DINAMICA microfibre as well as the designo floor mats edged in designo leather also contribute to the high-class appeal.



## THE FULL SPLENDOUR OF DESIGNO

Upholstery in designo leather with comfort seats at the front, a distinctive seat design with exclusive diamond quilting, plus “designo” badges fronts and rear

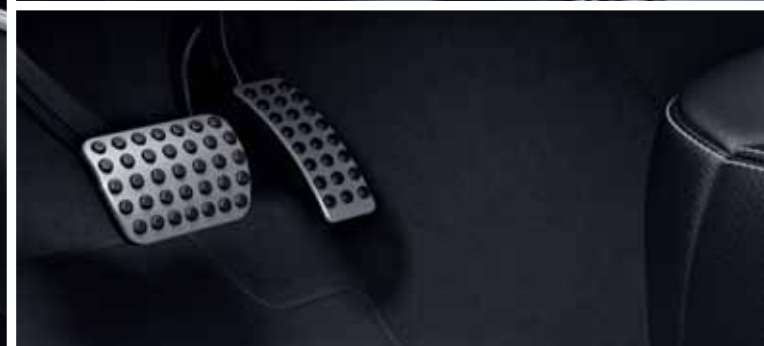
Dashboard and door centre panels in designo nappa leather

designo roof liner in DINAMICA microfibre

designo floor mats with edging in designo leather with “designo” badges







## SUV. S-Class. AMG. How much fascination can one car hold?

The optional AMG Line Exterior gives the GLS even more dynamic and muscular flair, a consequence above all of the distinctive AMG bodystyling. The AMG Line Interior, available separately, comprises sporty highlights coordinated to match the exterior with sleek and well-honed interior detailing.

### ➤ PURE AMG

Explore all the excitement of AMG from page 52.

### EXTERIOR HIGHLIGHTS

AMG bodystyling, comprising AMG-specific front and rear aprons, wheel arch extensions in the vehicle colour and side running boards

53.3 cm (21-inch) AMG 5-twin-spoke light-alloy wheels, painted titanium grey and with a high-sheen finish

53.3 cm (21-inch) AMG multi-spoke light-alloy wheels, painted titanium grey and with a high-sheen finish (optional)

Sports brake system with perforated front brake discs and brake calliper trim with "Mercedes-Benz" lettering

### INTERIOR HIGHLIGHTS

Sports seats in black pearl nappa leather/black leather

3-spoke multifunction sports steering wheel finished in black nappa leather

Brushed stainless steel sports pedals with rubber studs

AMG floor mats with "AMG" lettering







## Dress code: black tie. The Night package.

Building on the AMG Line Exterior, the Night package underscores the sporty, expressive character of the vehicle with striking design elements in black. The louvre in the radiator grille and the simulated underguard at the front and rear are finished in high-gloss black. Further highlights are the AMG 5-twin-spoke light-alloy wheels and the black exterior mirrors as well as the dark-tinted heat-insulating glass from the rear door windows back. The roof rails, window weatherstrip and also the beltline trim strip in black round off the Night package.

### NIGHT PACKAGE AT A GLANCE

---

Heat-insulating dark-tinted glass starting from the B-pillar (deselectable in certain countries)

---

Louvre in the radiator grille in high-gloss black

---

Roof rails in black

---

Beltline trim strip in black

---

53.3 cm (21-inch) AMG 5-twin-spoke light-alloy wheels, painted in black with a high-sheen finish

---

Simulated underguard at the front and rear in high-gloss black

---

Exterior mirrors in high-gloss black

---

Weatherstrip in black

---

## Genuine accessories.

Use our extensive range of genuine accessories to individualise the GLS. These cover almost every conceivable need for even more pleasant, practical and enjoyable motoring. Allow yourself to be inspired by the full range, available at: [www.mercedes-benz-accessories.com](http://www.mercedes-benz-accessories.com)

### GENUINE ACCESSORIES – HIGHLIGHTS AT A GLANCE

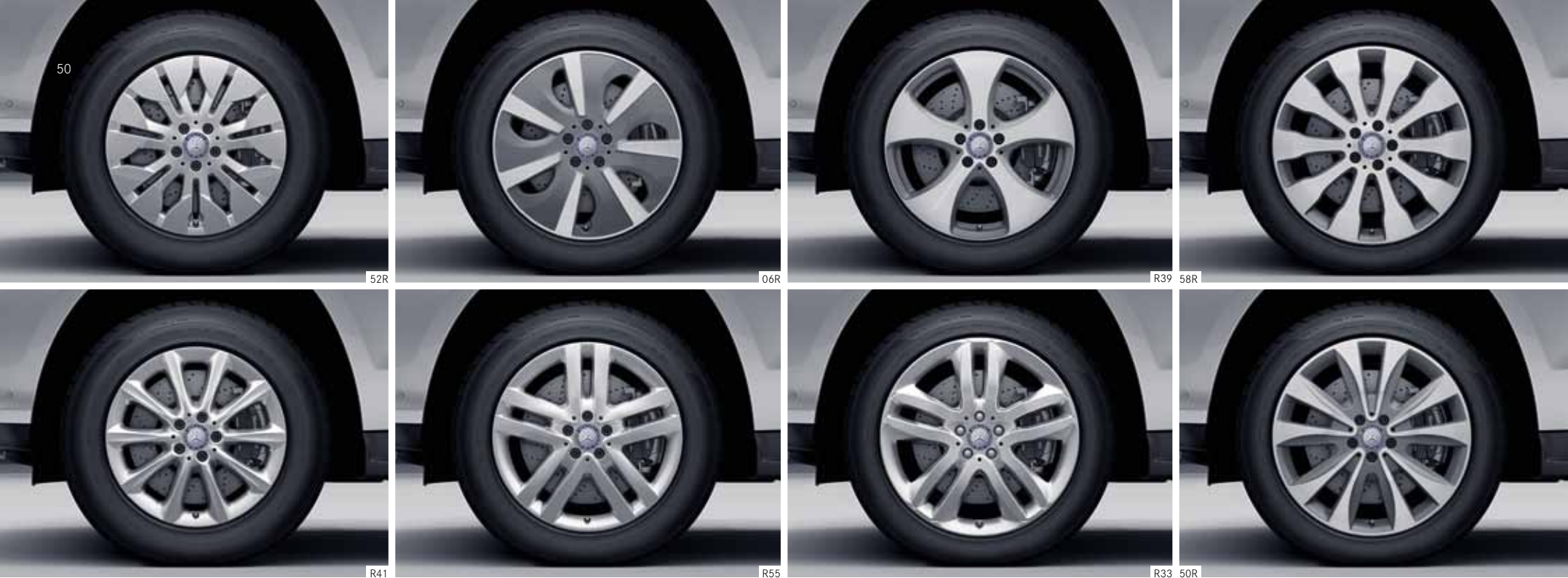
The lockable **rear-mounted cycle rack**, so easy to fit and use, is ideal for the safe transport of two or three bicycles. Extremely simple to fit on the trailer coupling and just as easy to secure your bikes to the mounts. Thanks to an ingenious roller mechanism the tailgate can still be opened. For storage purposes, the rack can be very simply folded away.

Ample storage for all those big plans. The aerodynamically designed Mercedes-Benz **roof box 450** in metallic black or matt silver, which can be opened from either side, has been especially configured for the GLS and combines innovative technology with safety. Whether you're off on a skiing break or a family holiday, its 450 l of load capacity and 75 kg payload are an effective solution to any transport problem.

The overall impression of sporty self-assurance is underlined by the **10-spoke light-alloy wheels**, painted himalayas grey and with a high-sheen finish, fitted with 275/50 R 20 tyres.







# Wheels.

Tyres are indispensable. In emotional as well as simply physical terms. The choice of wheel is an absolutely crucial factor in many people’s dream car. So we have put together a particularly broad selection for you.

## STANDARD EQUIPMENT AND OPTIONAL EXTRAS

- 52R 7-spoke light-alloy wheels with 265/60 R 18 tyres (option for GLS 350 d 4MATIC and GLS 400 4MATIC; not available in conjunction with the ACTIVE CURVE SYSTEM or AMG Line Exterior)
- R41 10-spoke light-alloy wheels with 265/60 R 18 tyres (option for GLS 350 d 4MATIC and GLS 400 4MATIC; not available in conjunction with the ACTIVE CURVE SYSTEM or AMG Line Exterior)
- 06R 7-spoke light-alloy wheel with a high-sheen finish, with 275/55 19 R tyres (option; not in conjunction with AMG Line Exterior)

- R55 5-twin-spoke light-alloy wheels with 275/55 R 19 tyres (option; not in conjunction with AMG Line Exterior)
- R39 5-spoke light-alloy wheels with 275/55 R 19 tyres (standard for GLS 500 4MATIC; option for GLS 350 d 4MATIC and GLS 400 4MATIC; not in conjunction with AMG Line Exterior)
- R33 5-twin-spoke light-alloy wheels with 275/50 R 20 tyres (option; not in conjunction with AMG Line Exterior)

- 58R 10-spoke alloy wheels with 275/50 20 R tyres (option; not in conjunction with AMG Line Exterior)
- 50R 10-spoke light-alloy wheels painted himalayas grey and with a high-sheen finish, with 275/50 R 20 tyres (option; not in conjunction with AMG Line Exterior)



86R



89R



692



51

90R



87R



689



88R

## AMG

86R AMG 5-twin-spoke light-alloy wheels, painted titanium grey and with a high-sheen finish, with 295/40 R 21 tyres (only in conjunction with AMG Line Exterior; not for Mercedes-AMG GLS 63 4MATIC)

87R AMG multi-spoke light-alloy wheels, painted titanium grey and with a high-sheen finish, with 295/40 R 21 tyres, (option; only in conjunction with AMG Line Exterior; not for Mercedes-AMG GLS 63 4MATIC)

89R 5-twin-spoke light-alloy wheels, painted black and with a high-sheen finish, with 295/40 R 21 tyres (option; only in conjunction with AMG Line Exterior and Night package; not for Mercedes-AMG GLS 63 4MATIC)

689 AMG cross-spoke light-alloy wheels, painted titanium grey and with a high-sheen finish, with 295/40 R 21 tyres (standard for Mercedes-AMG GLS 63 4MATIC)

692 AMG cross-spoke light-alloy wheels, painted matt black and with a high-sheen rim flange, with 295/40 R 21 tyres (option for Mercedes-AMG GLS 63 4MATIC)

88R AMG multi-spoke light-alloy wheels, painted matt black and with a high-sheen finish, with 285/40 R 22 tyres (option for Mercedes-AMG GLS 63 4MATIC)

90R AMG multi-spoke light-alloy wheels, painted matt black and with a high-sheen rim flange, with 285/40 R 22 tyres (option for Mercedes-AMG GLS 63 4MATIC)

## FURTHER WHEELS

can be found in our accessories range. Further information about the Mercedes-Benz Genuine Accessories range is available at [www.mercedes-benz-accessories.com](http://www.mercedes-benz-accessories.com) or from your authorised Mercedes-Benz dealer.



# Drive Supreme: The Mercedes-AMG GLS 63.

Mercedes-AMG is not just a manufacturer of performance vehicles and sports cars, AMG is a promise. The promise that we will always go that one step further. That we expect a lot and give our all. Which is how we create exceptional automobiles for exceptional people.

The Mercedes-AMG GLS 63, too, embodies our commitment to achieving the utmost – every moment, every metre.

Welcome to the world of AMG.







# High-performance SUV.

Powerfully distinctive design, impressive dimensions – the Mercedes-AMG GLS 63 follows only one style: its own. Front apron in A-wing design with large cooling air inlets. Flics for improved aerodynamics. Radiator grille with black-painted louvres and AMG logo in silver chrome. Complemented by wheel arches extended by 44 mm for an even wider stance. Styling elements that underline the GLS's positioning within the high-performance SUV range of AMG – and that make it the S-Class among the SUVs. And a look that is just made for people who make an impact by their sheer presence.





# DESIGN





# First place, seven times over.

Once you're inside the car, your original destination becomes irrelevant. The 3-spoke AMG Performance steering wheel in leather with aluminium gearshift paddles is soothing to the touch, the spacious interior to all the senses. The Mercedes-AMG GLS 63 does not only impress by sheer force of size; it is also one of the safest and most comfortable performance vehicles around. And, thanks to seven proper seats, for several people all at once. The most popular of its seven seats is always the same one: the perfectly moulded nappa leather sports seat behind the steering wheel.



# POWER







## Mobile reward centre.

Making every day special: one of the most powerful standard-production SUV models from AMG. The peak performance of the AMG 5.5-litre V8 biturbo is impressive, at 430 kW (585 hp) and 760 Nm. DYNAMIC SELECT allows the driving characteristics to be set to any one of five stages, ranging from efficiently comfortable to sporty. And whichever mode you're in, putting your foot down on the accelerator will take you to 100 km/h in 4.6 seconds. At the same time the AMG SPEEDSHIFT PLUS 7G-TRONIC transmission keeps shift times short and traction continuous, as the everyday routine recedes rapidly in your rearview mirror.





# Eyes forward.

Keeping a step ahead, even of the darkness. The Intelligent Light System automatically adjusts the LED headlamps in such a way that the route ahead is always optimally illuminated – whatever the weather and driving conditions and even in bends or when turning off. Because those who prefer to go their own way still need to know, even when the light is bad, where the journey's taking them.





# Making the best of every road. Even when there isn't one.

On the motorway, in fast bends or off road – the AMG Performance 4MATIC system makes the most of any terrain. Permanent all-wheel drive distributes the power between the front and rear axles on a 40 : 60 basis, while the ACTIVE CURVE SYSTEM uses active suspension stabilisers to reduce roll. All of which adds up to guarantee assured and predictable driving characteristics with added traction, directional stability and increased agility around the vehicle's vertical axis. But what you make of all that is, of course, completely up to you.









Passion grows when it is shared: the AMG Private Lounge is our community centred on the world of AMG. AMG customers can come here for a chance to attend top-class events and use our online platform to chat about the latest developments from Affalterbach. Doing so allows them to benefit from special offers and from the direct link to AMG's headquarters: [www.mercedes-amg.com/privatelounge/welcome](http://www.mercedes-amg.com/privatelounge/welcome)

The AMG Driving Academy stands for an incomparable team spirit: experience performance with like-minded drivers and improve your driving skills at racetrack and lifestyle events held at breathtaking locations around the world. Become a part of the "World's Fastest Family": [www.mercedes-amg.com/driving-academy](http://www.mercedes-amg.com/driving-academy)

Still want more? The AMG Customer Sports Program is AMG's platform for professional motorsport – and the Mercedes-AMG GT3 the racing car that has been specifically designed for this purpose. A fully integrated service environment allows you to participate in motorsport at the highest level: [www.mercedes-amg.com/customersports](http://www.mercedes-amg.com/customersports)

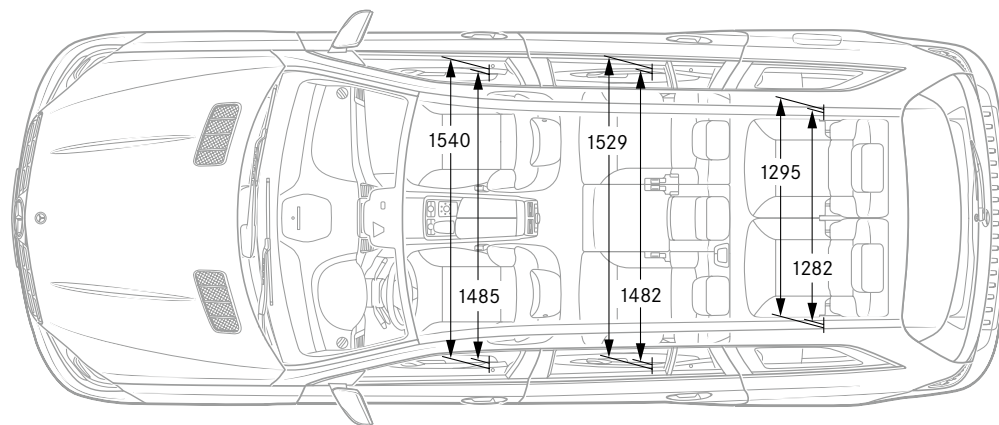
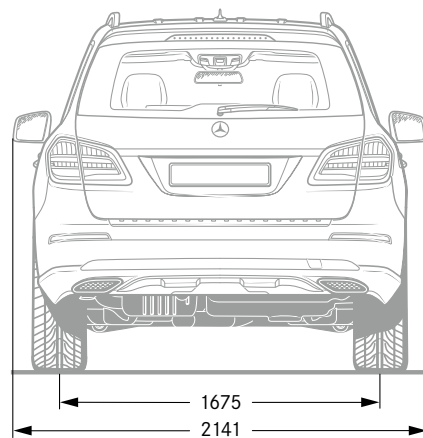
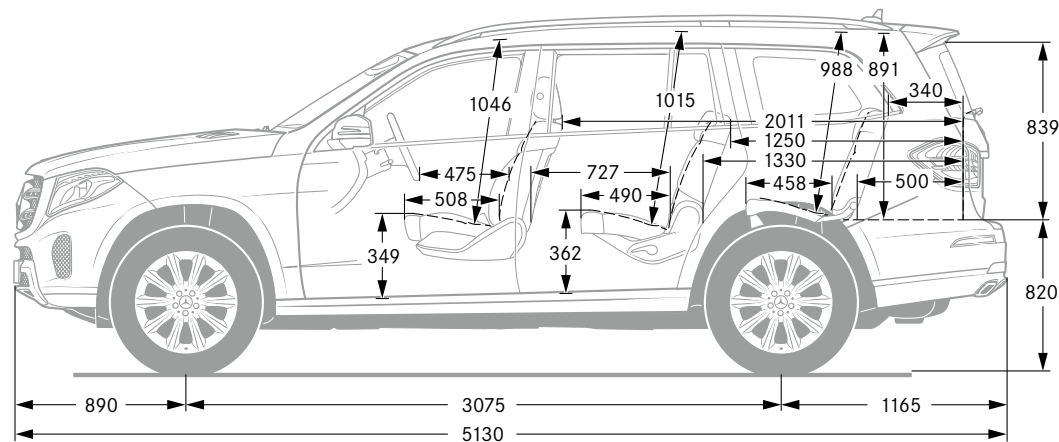
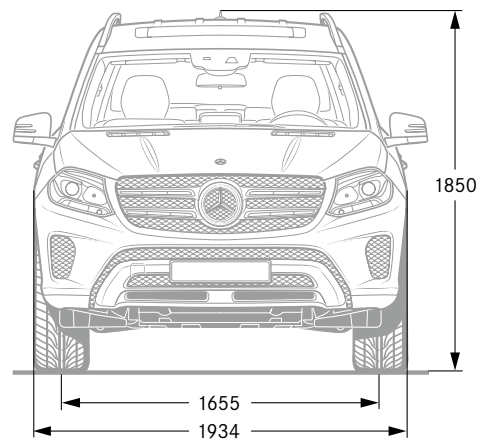
In the AMG Performance Studio we create cars that are perfectly tailored to your wishes and desires. No limits are placed on the creativity of our experts, who demonstrate their unparalleled craftsmanship and attention to detail in areas as varied as special technical components, extravagant paintwork finishes and the most exclusive interior appointments imaginable, to produce one-off masterpieces.

Enter the world of AMG. Experience true Driving Performance.

# We don't just build cars. We make dreams come true.

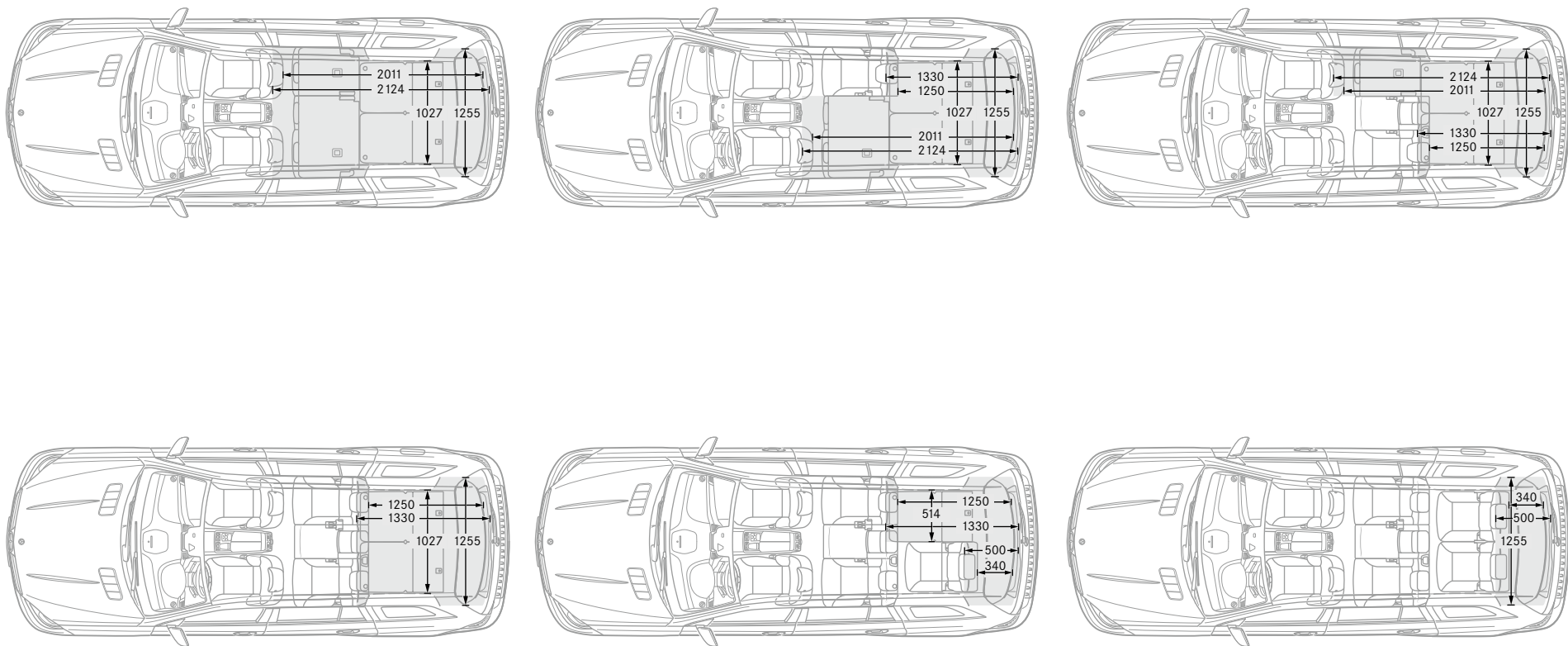


Dimensions.



All dimensions in millimetres. The dimensions shown are mean values and apply to standard-specification, unladen vehicles.

## Load compartment dimensions.



All dimensions in millimetres. The dimensions shown are mean values and apply to standard-specification, unladen vehicles.



Technical data.

Cylinder arrangement/number
Displacement (cc)
Rated output <sup>1</sup> (kW (hp) at rpm)
Rated torque <sup>1</sup> (Nm at rpm)
Transmission
Acceleration 0–100 km/h (s)
Top speed (km/h)
Tyres/wheels, front, rear
Fuel
Fuel consumption <sup>3</sup> (l/100 km)
Urban
Extra-urban
Combined
CO <sub>2</sub> emissions <sup>3</sup> combined (g/km)
Emission class <sup>4</sup> /efficiency class <sup>5</sup>
Tank capacity, of which reserve (l)
Load compartment capacity <sup>6</sup> (VDA) (l)
Turning circle (m)
Length <sup>7</sup> /width incl. mirrors <sup>7</sup> (mm)
Wheelbase <sup>7</sup> (mm)
Track width front <sup>7</sup> /rear <sup>7</sup> (mm)
Kerb weight <sup>8</sup> /payload (kg)
Perm. GVW (kg)
Perm. towing capacity unbraked/braked [at 12%] (kg)

Diesel engine

GLS 350 d 4MATIC
V/6
2987
190 (258)/3400
620/1600–2400
9G-TRONIC
7.8
222
265/60 R 18, 265/60 R 18
Diesel
8.2–7.6
7.2–6.7
7.6–7.1
199–185
Euro 6/A
100/12.0
680–2300
12.40
5130/2141
3075
1655/1675
2475/775
3250
750/3500

Petrol engines

GLS 400 4MATIC	GLS 500 4MATIC	Mercedes-AMG GLS 63 4MATIC
V/6	V/8	V/8
2996	4663	5461
245 (333)/5250–6000	335 (455)/5250–5500	430 (585)/5500
480/1600–4000	700/1800–4000	760/1750–5250
9G-TRONIC	9G-TRONIC	AMG SPEEDSHIFT PLUS 7G-TRONIC
6.6	5.3	4.6
240	250 <sup>2</sup>	250 <sup>2</sup>
265/60 R 18, 265/60 R 18	275/55 R 19, 275/55 R 19	295/40 ZR 21, 295/40 ZR 21
Premium petrol	Premium petrol	Super Plus petrol
11.7–11.1	14.9–14.6	15.8
8.0–7.5	9.2–8.8	10.3
9.4–8.9	11.3–10.9	12.3
218–206	264–255	288
Euro 6/B	Euro 6/D	Euro 6/E
100/12.0	100/12.0	100/14.0
680–2300	680–2300	680–2300
12.40	12.40	12.40
5130/2141	5130/2141	5162/2141
3075	3075	3075
1645/1665	1645/1665	1676/1696
2445/805	2460/790	2580/710
3250	3250	3290
750/3500	750/3500	750/3290

The best for your engine:  
Mercedes-Benz genuine engine oils.

<sup>1</sup> Details of rated power and rated torque in accordance with Directive (EC) no. 595/2009 in the currently applicable version. <sup>2</sup> Electronically governed. <sup>3</sup> The fuel consumption and CO<sub>2</sub> emission figures shown were obtained in accordance with the prescribed measuring process (§2 nos. 5, 6, 6a Pkw-EnVKV (German ordinance on fuel efficiency labelling for passenger cars) as amended. The figures are not based on an individual vehicle and do not constitute part of the product offer; they are provided solely for purposes of comparison between different vehicle models. Figures will vary according to the wheels/tyres fitted. <sup>4</sup> Valid within the European Union only. Information may vary from country to country. <sup>5</sup> Determined on the basis of the measured CO<sub>2</sub> emissions, taking into account the mass of the vehicle. <sup>6</sup> Figures in accordance with Directive 2007/46/EC in the currently applicable version. <sup>7</sup> The dimensions shown are median figures, and apply for basic-specification, unladen vehicles. <sup>8</sup> Figures in accordance with Directive 92/21/EC in the currently applicable version (kerb weight with fuel tank 90% full, driver, 68 kg, and luggage, 7 kg) for standard-specification vehicles. Optional extras and accessories will generally increase this figure, with a corresponding reduction in payload. Further technical data are available online at: [www.mercedes-benz.com](http://www.mercedes-benz.com)

# Upholstery and trim.

## Upholstery

111	black <sup>1</sup>
114	espresso brown <sup>1</sup>
115	ginger beige/espresso brown <sup>1</sup>
125	ginger beige/black <sup>1</sup>
211	black <sup>2, 3, 4</sup>
215	ginger beige/espresso brown <sup>2, 3, 4</sup>
224	saddle brown/black <sup>2, 3, 4</sup>
228	crystal grey/black <sup>2, 3, 4</sup>
245	ginger beige/black <sup>2, 3, 4</sup>
531	black <sup>5</sup>
534	espresso brown/black <sup>5</sup>
535	porcelain/black <sup>5</sup>
811	black pearl/black <sup>6</sup>
831	black <sup>7</sup>
834	espresso brown/black <sup>7</sup>
835	porcelain/black <sup>7</sup>
954	espresso brown <sup>2</sup>
955	porcelain/black <sup>2</sup>

## Trim

739	aluminium with light longitudinal grain <sup>2, 7</sup>
734	high-gloss brown eucalyptus wood <sup>1</sup>
731	high-gloss brown burr walnut wood <sup>2</sup>
H09	brown open-pore ash wood <sup>2, 4</sup>
729	high-gloss black poplar wood <sup>2</sup>
H21	black piano lacquer <sup>2</sup>
H10	AMG carbon fibre/black piano lacquer <sup>2</sup>

<sup>1</sup> Standard for GLS 350 d 4MATIC and GLS 400 4MATIC. <sup>2</sup> Optional extra. <sup>3</sup> Standard in conjunction with EXCLUSIVE interior. <sup>4</sup> Standard for GLS 500 4MATIC. <sup>5</sup> Optional extra for Mercedes-AMG GLS 63 4MATIC. <sup>6</sup> Only in conjunction with AMG Line Interior. <sup>7</sup> Standard for Mercedes-AMG GLS 63 4MATIC.

## ARTICO man-made leather



111



114

115  
125

## Leather



211

215  
245

224



228



Nappa leather/leather



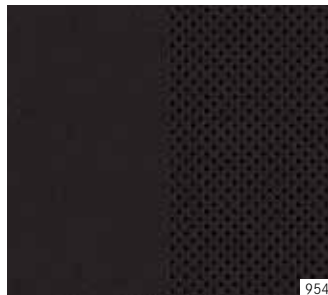
AMG nappa leather



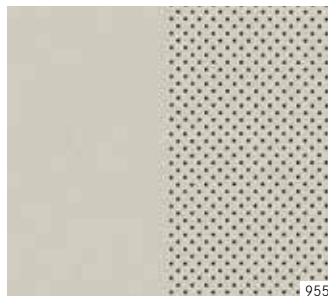
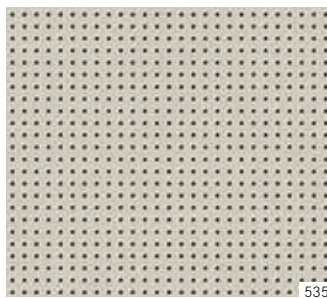
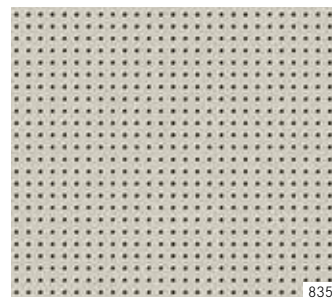
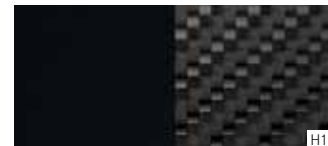
AMG Exclusive nappa leather



designo Exclusive nappa leather



Trim



# Paintwork.

## Non-metallic paints

040 black  
149 polar white

## Metallic paints<sup>1</sup>

197 obsidian black  
775 iridium silver  
796 citrine brown  
890 cavanisite blue  
896 brilliant blue  
988 diamond silver  
992 selenite grey

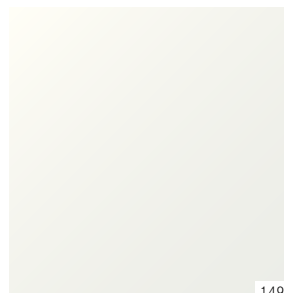
## designo paints<sup>1</sup>

799 designo diamond white bright  
996 designo hyacinth red metallic

## Non-metallic paints



040

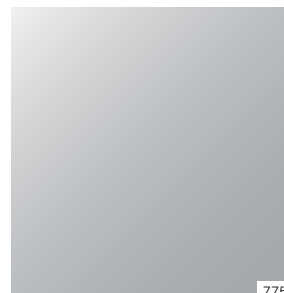


149

## Metallic paints<sup>1</sup>



197



775



796



890



896



988



992

## designo paints<sup>1</sup>



799



996

<sup>1</sup> Optional extra.





**Mercedes-Benz is one of the founding partners of the “Laureus Sport for Good Foundation”.**

Since the foundation was established in 2000, Mercedes-Benz has been supporting and promoting the aims and values of this worldwide non-profit-making programme: to use social sports projects to improve the lives of children and young people who are disadvantaged or suffering from illness. Laureus has become a fundamental element of Mercedes-Benz’s social responsibility. Every new Mercedes is an ambassador embodying these values. In buying a Mercedes you are supporting the “Laureus Sport for Good Foundation”.

**Please note:** changes may have been made to the product since this publication went to press (04.01.2017). The manufacturer reserves the right during the delivery period to make changes to the design, form, colour or specification, provided these changes, while taking into account the interests of the vendor, can be deemed reasonable with respect to the purchaser. Where the vendor or the manufacturer uses symbols or numbers to describe an order or the subject of an order, no rights may be derived solely from these. The illustrations may include accessories and optional extras which do not form part of the standard specification. Actual colours may differ slightly from those shown owing to the limitations of the printing process. This brochure is distributed internationally. Information given regarding statutory regulations, legal requirements and taxation and the consequences thereof applies to the Federal Republic of Germany only and is correct at the time of going to press. For current and more specific information in relation to the range of models, features, optional extras, colours and/or services available in your country, and their pricing, you should contact your nearest authorised Mercedes-Benz Passenger Car Dealer.

**[www.mercedes-benz.com](http://www.mercedes-benz.com)**

**Take-back of end-of-life vehicles.** At the end of its life, you can return your GLS to us for environment-friendly disposal in accordance with the European Union (EU) End-Of-Life Vehicle Directive. But that day lies a long way off.

A network of vehicle take-back depots and dismantlers is available to make returning your vehicle as easy as possible for you. You are welcome to return your vehicle to one of these establishments free of charge. In so doing, you will be making a valuable contribution towards completing the recycling process and conserving resources.

For further information about the recycling and disposal of end-of-life vehicles and take-back conditions, please visit your national Mercedes-Benz website.